



# SERIE AX88

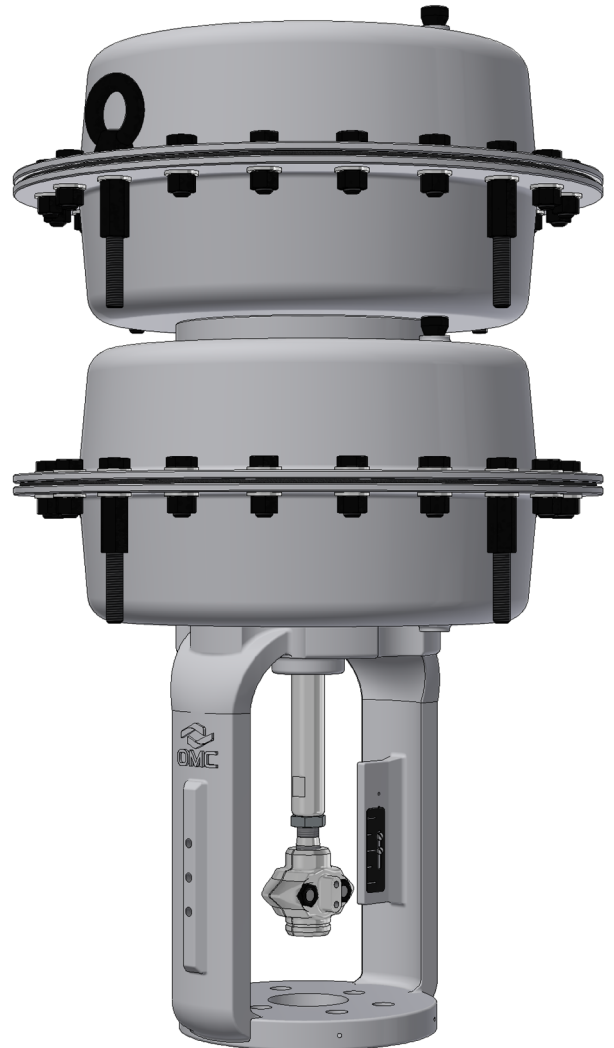
*Pneumatic actuators from 2 to 40kN*

## DESCRIPTION

Linear multispring diaphragm actuators able to satisfy a wide range of applications for throttling and on/off operations. Fitted with a mechanical travel indicator, the integral yoke is in compliance with standard **CEI EN 60534-6-1** and is designed for the mounting of various accessories, such as positioners, limit switches, ect...

The AX88 actuators can be provided with:

- Top handwheel for emergency manual override (TX)
- Side handwheel for emergency manual override (LX)
- Mechanical travel stop in both directions<sup>(a)</sup>



## MAIN FEATURES

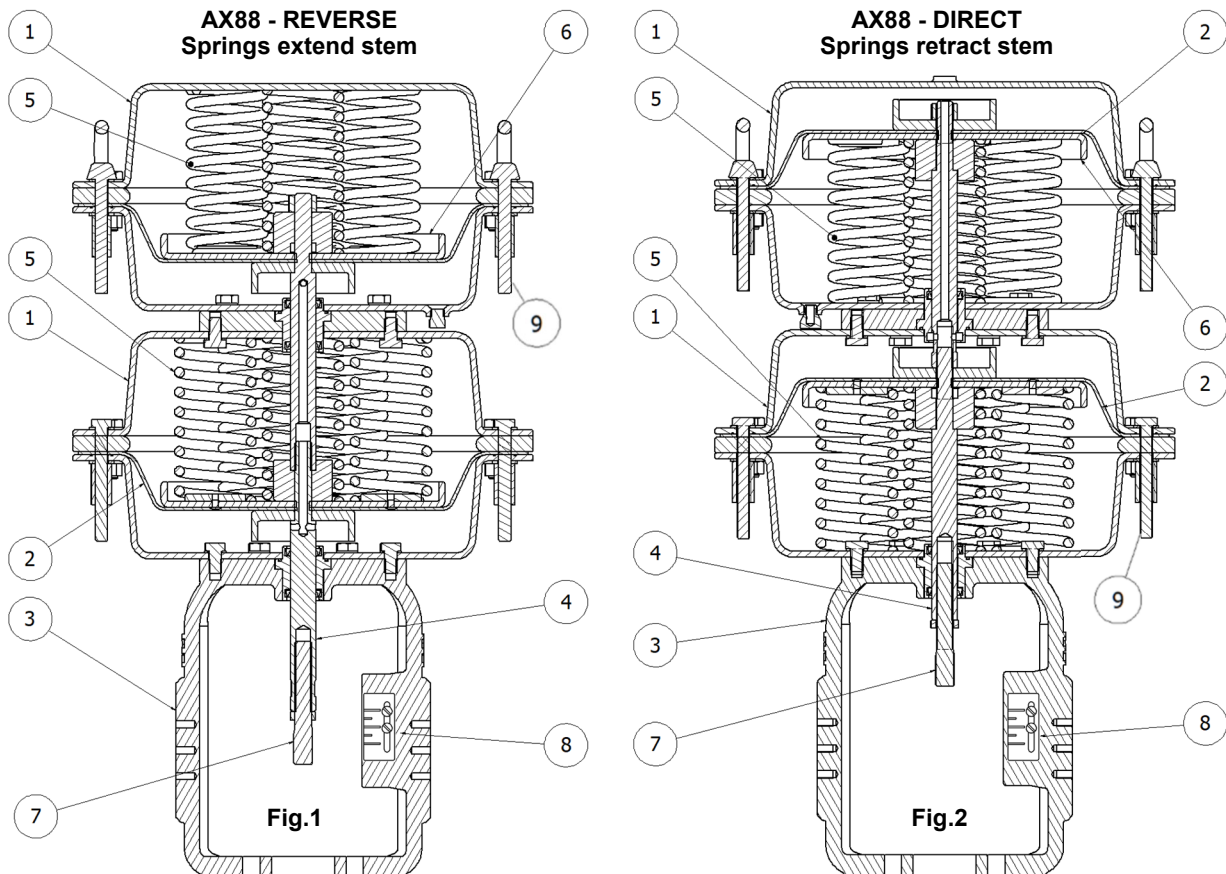
- ◆ Reversible on the field, without auxiliary components <sup>(b)</sup>
- ◆ Wide range of available thrusts
- ◆ Compact design
- ◆ Yoke according to CEI EN 60534-6-1 (Namur)
- ◆ Mechanical travel adjustment
- ◆ Construction with integral yoke made of carbon steel or stainless steel
- ◆ Full stainless steel construction on request
- ◆ Strong operating force by admissible pressure supply up to 6 bar
- ◆ Smoothly sliding stems to guarantee an extremely low hysteresis
- ◆ Versatile pairing between stem and valve, composed of a female thread M10 + removable OMC clamp attachment (see Fig.3 and Fig.4 Pag.7 SEC: B-B / see Fig. 5 and Fig.6 Pag. 8 SEC B-B)


**TYPE**

TYPE	Multispring Diaphragm
ACTION	Direct Action (Springs retract stem) - REVERSIBLE ON SITE Reverse Action (Springs extend stem) - REVERSIBLE ON SITE
MAXIMUM ALLOWABLE PRESSURE	87 psi (6 bar)
PNEUMATIC CONNECTIONS	1/4" NPT-F (1/2" NPT-F SU RICHIESTA)

**MATERIALS (\*RECOMMENDED SPARE PARTS)**

COMPONENT	STANDARD	ON DEMAND
1 - HOUSING	Painted Steel 1.0332 / 1.0335 (T.amb $\geq -50^{\circ}\text{C}$ / $-58^{\circ}\text{F}$ )	Stainless Steel AISI 316 (T.amb $\geq -268^{\circ}\text{C}$ / $-450^{\circ}\text{F}$ )
2 - DIAPHRAGM (*)	NBR (T.amb $-35+90^{\circ}\text{C}$ / $-31+194^{\circ}\text{F}$ )	EPDM (T.amb $-50+120^{\circ}\text{C}$ / $-58+248^{\circ}\text{F}$ ) PVMQ (T.amb $-60+90^{\circ}\text{C}$ / $-76+194^{\circ}\text{F}$ )
3 - YOKE	Painted ASTM A216 WCB (T.amb $\geq -29^{\circ}\text{C}$ / $-20^{\circ}\text{F}$ )	Steel ASTM A351 CF8M (T.amb $\geq -268^{\circ}\text{C}$ / $-450^{\circ}\text{F}$ )
4 - STEM	Stainless Steel 17.4-PH H900 (T.amb $\geq -268^{\circ}\text{C}$ / $-450^{\circ}\text{F}$ )	OTHER
5 - SPRINGS (*)	Painted EN 10270-1 SH (T.amb $\geq -30^{\circ}\text{C}$ / $-22^{\circ}\text{F}$ )	EN 10270-3 1.4310 (AISI 301) EN 10270-3 1.4401 (AISI 316) (T.amb $\geq -268^{\circ}\text{C}$ / $-450^{\circ}\text{F}$ )
6 - INTERNAL PARTS	Painted Steel 1.0332 / 1.0335 (T.amb $\geq -50^{\circ}\text{C}$ )	Stainless Steel AISI 316 (T.amb $\geq -268^{\circ}\text{C}$ / $-450^{\circ}\text{F}$ )
7 - ADJUSTABLE OMC VALVE CLAMP CONNECTION	Stainless Steel 17.4-PH H900 (T.amb $\geq -268^{\circ}\text{C}$ / $-450^{\circ}\text{F}$ )	OTHER
8 - TRAVEL INDICATOR	ANODIZED ALLUMINIUM	///
9 - BOLTS AND NUTS	A193 B7 - A194 2H (GALVANIZED STEEL 8.8) (T.amb $\geq -29^{\circ}\text{C}$ / $-20^{\circ}\text{F}$ )	A193 8M - A194 8M (Stainless Steel A4-80) (T.amb $\geq -268^{\circ}\text{C}$ / $-58^{\circ}\text{F}$ )

**ACTUATOR INTERNAL PARTS**



**PROTECTIVE COATINGS**

STANDARD	Electrostatic painting with epoxy powder RAL 7047 matte (standard)
ON DEMAND	Special paintings (Es. ISO12944-2 C4 / C5 Etc... ), galvanizing, ect..

**DATI TECNICI**

Nr. of Springs	MAX TRAVEL	NOMINAL TRAVEL	TRAVEL VOLUME	SPRING RANGE	kN (c) (d) (e)	THRUST AREA	THRUST AT 1 psi		
14	68mm 2,67"	20mm 0,787 inch	608 cm <sup>3</sup> x 2 37,10 inch <sup>3</sup> x 2	24+34 psi	24	304cm <sup>2</sup> x 2 47,12 inch <sup>2</sup> x 2	1kN		
				36+46 psi	36				
	68mm 2,67"	30mm 1,180 inch	912 cm <sup>3</sup> x 2 55,65 inch <sup>3</sup> x 2	24+40 psi	24				
				29+47 psi	29				
				35mm 1,377 inch	1064 cm <sup>3</sup> x 2 64,92 inch <sup>3</sup> x 2			26+47 psi	26
				50mm 1,968 inch	1520 cm <sup>3</sup> x 2 92,75 inch <sup>3</sup> x 2			18+46 psi	18
	82mm 3,22"	75mm 2,952 inch	1824 cm <sup>3</sup> x 2 111,30 inch <sup>3</sup> x 2	12+46 psi	12				
				2280 cm <sup>3</sup> x 2 139,13 inch <sup>3</sup> x 2	6+49 psi			6	
	6	68mm 2,67"	20mm 0,787 inch	912 cm <sup>3</sup> x 2 55,65 inch <sup>3</sup> x 2	15+20 psi			15	
			30mm 1,18 inch	912 cm <sup>3</sup> x 2 55,65 inch <sup>3</sup> x 2	13+20 psi			13	
35mm 1,377 inch			1064 cm <sup>3</sup> x 2 64,92 inch <sup>3</sup> x 2	12+20 psi	12				
50mm 1,968 inch			1520 cm <sup>3</sup> x 2 92,75 inch <sup>3</sup> x 2	8+20 psi	8				
60mm 2,362 inch			1824 cm <sup>3</sup> x 2 111,30 inch <sup>3</sup> x 2	5+20 psi	5				
82mm 3,22"		75mm 2,952 inch	2280 cm <sup>3</sup> x 2 139,13 inch <sup>3</sup> x 2	2+21 psi	2				

c - for reverse actuators, generated thrust by extended springs at signal = 0 psi

d - for direct actuators, generated thrust by retracted springs at signal = 0 psi

e - generated thrust at minimum spring range value


Example: with nominal actuator signal 12+46 PSI; to achieve 12 kN the actuator signal must be 0+46 psi




## DIFFERENTIAL PRESSURES CHARTS IN bar ON TWO WAY OMC VALVES

### UNBALANCED TRIM - FLOW TO OPEN




<b>REVERSE ACTION - SPRINGS TO CLOSE - N.C.</b> ↓				<b>LEAKAGE CLASS</b> ANSI FCI 70.2 - IEC 60534-4												 <b>cl. IV</b>	
SPRING RANGE (psi)	SPRING RANGE CODE	ACTUATOR SIGNAL (psi) (g)	TRAVEL	MAX DIFFERENTIAL PRESSURES IN bar on SEAT DIAMETER in mm												YOKE TYPE	kN (g)
				20mm 0,787"	25mm 0,984"	30mm 0,984"	38mm 1,496"	49mm 1,929"	64mm 2,519"	76mm 2,992"	100mm 3,937"	126mm 4,960"	151mm 5,944"	201mm 7,913"	250mm 9,842"		
36÷46	5	0÷46	20mm 0,787"	876,4	559,5	390,6	242,3	145,5	//	//	//	//	//	//	//	C,D	36
30÷46	5	0÷46	30mm 1,181"	//	//	//	//	//	71,7	50,8	29,4	//	//	//	//		30
28÷46	5	0÷46	35mm 1,377"	//	//	//	//	//	//	//	27,4	//	//	//	//		28
18÷46	5	0÷46	50mm 1,968"	//	//	//	//	//	//	//	//	11,1	7,7	4,4	//		18
12÷46	5	0÷46	60mm 2,362"	//	//	//	//	//	//	//	//	//	//	2,9	//		12
6÷49	5	0÷49	75mm 2,952"	//	//	//	//	//	//	//	//	//	//	//	0,9		6

**g - thrust on seat by actuator signal**

<b>REVERSE ACTION - SPRINGS TO CLOSE - N.C.</b> ↓				<b>LEAKAGE CLASS</b> ANSI FCI 70.2 - IEC 60534-4												 <b>cl. V</b>	
SPRING RANGE (psi)	SPRING RANGE CODE	ACTUATOR SIGNAL (psi) (g)	TRAVEL	MAX DIFFERENTIAL PRESSURES IN bar on SEAT DIAMETER in mm												YOKE TYPE	kN (g)
				20mm 0,787"	25mm 0,984"	30mm 0,984"	38mm 1,496"	49mm 1,929"	64mm 2,519"	76mm 2,992"	100mm 3,937"	126mm 4,960"	151mm 5,944"	201mm 7,913"	250mm 9,842"		
36÷46	5	0÷46	20mm 0,787"	790,2	504,2	350,6	218,1	131,7	//	//	//	//	//	//	//	C,D	36
30÷46	5	0÷46	30mm 1,181"	//	//	//	//	//	64,3	45,6	27,4	//	//	//	//		30
28÷46	5	0÷46	35mm 1,377"	//	//	//	//	//	//	//	26,3	//	//	//	//		28
18÷46	5	0÷46	50mm 1,968"	//	//	//	//	//	//	//	//	9,9	6,9	3,9	//		18
12÷46	5	0÷46	60mm 2,362"	//	//	//	//	//	//	//	//	//	//	2,6	//		12
6÷49	5	0÷49	75mm 2,952"	//	//	//	//	//	//	//	//	//	//	//	0,8		6

**g - thrust on seat by actuator signal**

<b>REVERSE ACTION - SPRINGS TO CLOSE - N.C.</b> ↓				<b>LEAKAGE CLASS</b> ANSI FCI 70.2 - IEC 60534-4												 <b>cl. VI</b>	
SPRING RANGE (psi)	SPRING RANGE CODE	ACTUATOR SIGNAL (psi) (g)	TRAVEL	MAX DIFFERENTIAL PRESSURES IN bar on SEAT DIAMETER in mm												YOKE TYPE	kN (g)
				20mm 0,787"	25mm 0,984"	30mm 0,984"	38mm 1,496"	49mm 1,929"	64mm 2,519"	76mm 2,992"	100mm 3,937"	126mm 4,960"	151mm 5,944"	201mm 7,913"	250mm 9,842"		
30÷46	5	0÷46 (f)	30mm 1,181"	//	//	//	//	//	81,1	57,5	33,2	//	//	//	//	C,D	30
28÷46	5	0÷46 (f)	35mm 1,377"	//	//	//	//	//	//	//	31,0	//	//	//	//		28
18÷46	5	0÷46 (f)	50mm 1,968"	//	//	//	//	//	//	//	//	12,6	8,7	4,9	//		18
12÷46	5	0÷46	60mm 2,362"	//	//	//	//	//	//	//	//	//	//	3,3	//		12
6÷49	5	0÷49	75mm 2,952"	//	//	//	//	//	//	//	//	//	//	//	1,1		6

**f - only for PEEK sealing - not suitable for PTFE**

**g - thrust on seat by actuator signal**



**DIRECT ACTION - SPRINGS TO OPEN - N.O.**



**LEAKAGE CLASS**  
ANSI FCI 70.2 - IEC 60534-4



**cl. IV**

SPRING RANGE (psi)	SPRING RANGE CODE	ACTUATOR SIGNAL (psi) (g)	TRAVEL	MAX DIFFERENTIAL PRESSURES IN bar on SEAT DIAMETER in mm												YOKE TYPE	kN (g)
				20mm 0,787"	25mm 0,984"	30mm 0,984"	38mm 1,496"	49mm 1,929"	64mm 2,519"	76mm 2,992"	100mm 3,937"	126mm 4,960"	151mm 5,944"	201mm 7,913"	250mm 9,842"		
36÷46	5	36÷64	20mm 0,787"	438,2	279,8	195,3	121,2	72,7	//	//	//	//	//	//	//	C,D	18
30÷46	5	30÷64	30mm 1,181"	//	//	//	//	//	43,0	30,5	17,6	//	//	//	//		18
28÷46	5	28÷64	35mm 1,377"	//	//	//	//	//	//	//	17,6	//	//	//	//		18
18÷46	5	18÷64	50mm 1,968"	//	//	//	//	//	//	//	//	11,1	7,7	4,4	//		18
12÷46	5	12÷64	60mm 2,362"	//	//	//	//	//	//	//	//	//	//	4,4	//		18
6÷49	5	6÷64	75mm 2,952"	//	//	//	//	//	//	//	//	//	//	//	0,9		15
15÷20	6	15÷60	20mm 0,787"	973,8	621,7	434,0	269,2	161,6	//	//	//	//	//	//	//		40
13÷20	6	13÷60	30mm 1,181"	//	//	//	//	//	95,6	67,8	39,2	//	//	//	//		40
12÷20	6	12÷60	35mm 1,377"	//	//	//	//	//	//	//	39,2	//	//	//	//		40
8÷20	6	8÷60	50mm 1,968"	//	//	//	//	//	//	//	//	24,7	17,2	9,7	//		40
5÷20	6	5÷60	60mm 2,362"	//	//	//	//	//	//	//	//	//	//	9,7	//		40
2÷21	6	2÷60	75mm 2,952"	//	//	//	//	//	//	//	//	//	//	//	6,1		39

**g - thrust on seat by actuator signal**

**DIRECT ACTION - SPRINGS TO OPEN - N.O.**



**LEAKAGE CLASS**  
ANSI FCI 70.2 - IEC 60534-4



**cl. V**

SPRING RANGE (psi)	SPRING RANGE CODE	ACTUATOR SIGNAL (psi) (g)	TRAVEL	MAX DIFFERENTIAL PRESSURES IN bar on SEAT DIAMETER in mm												YOKE TYPE	kN (g)
				20mm 0,787"	25mm 0,984"	30mm 0,984"	38mm 1,496"	49mm 1,929"	64mm 2,519"	76mm 2,992"	100mm 3,937"	126mm 4,960"	151mm 5,944"	201mm 7,913"	250mm 9,842"		
36÷46	5	36÷64	20mm 0,787"	395,1	252,1	175,3	109,0	65,9	//	//	//	//	//	//	//	C,D	18
30÷46	5	30÷64	30mm 1,181"	//	//	//	//	//	38,6	27,3	15,8	//	//	//	//		18
28÷46	5	28÷64	35mm 1,377"	//	//	//	//	//	//	//	15,8	//	//	//	//		18
18÷46	5	18÷64	50mm 1,968"	//	//	//	//	//	//	//	//	9,9	6,9	3,9	//		18
12÷46	5	12÷64	60mm 2,362"	//	//	//	//	//	//	//	//	//	//	2,6	//		18
6÷49	5	6÷64	75mm 2,952"	//	//	//	//	//	//	//	//	//	//	//	0,8		15
15÷20	6	15÷60	20mm 0,787"	878,0	560,2	389,6	242,3	146,4	//	//	//	//	//	//	//		40
13÷20	6	13÷60	30mm 1,181"	//	//	//	//	//	85,7	60,8	35,1	//	//	//	//		40
12÷20	6	12÷60	35mm 1,377"	//	//	//	//	//	//	//	35,1	//	//	//	//		40
8÷20	6	8÷60	50mm 1,968"	//	//	//	//	//	//	//	//	22,1	15,4	8,7	//		40
5÷20	6	5÷60	60mm 2,362"	//	//	//	//	//	//	//	//	//	//	8,7	//		40
2÷21	6	2÷60	75mm 2,952"	//	//	//	//	//	//	//	//	//	//	//	5,5		39

**g - thrust on seat by actuator signal**



**DIRECT ACTION - SPRINGS TO OPEN - N.O.**  **LEAKAGE CLASS**  **cl. VI**  
ANSI FCI 70.2 - IEC 60534-4

SPRING RANGE (psi)	SPRING RANGE CODE	ACTUATOR SIGNAL (psi) (g)	TRAVEL	MAX DIFFERENTIAL PRESSURES IN bar on SEAT DIAMETER in mm												YOKE TYPE	kN (g)
				20mm 0,787"	25mm 0,984"	30mm 0,984"	38mm 1,496"	49mm 1,929"	64mm 2,519"	76mm 2,992"	100mm 3,937"	126mm 4,960"	151mm 5,944"	201mm 7,913"	250mm 9,842"		
36+46	5	36+64	20mm 0,787"	995,6	636,9	442,0	275,7	166,0	//	//	//	//	//	//	//	C,D	18
30+46	5	30+64	30mm 1,181"	//	//	//	//	//	48,7	34,5	19,9	//	//	//	//		18
28+46	5	28+64	35mm 1,377"	//	//	//	//	//	//	//	19,9	//	//	//	//		18
18+46	5	18+64	50mm 1,968"	//	//	//	//	//	//	//	//	12,6	8,7	4,9	//		18
12+46	5	12+64	60mm 2,362"	//	//	//	//	//	//	//	//	//	//	4,9	//		18
6+49	5	6+64	75mm 2,952"	//	//	//	//	//	//	//	//	//	//	//	1,1		15
15+20	6	15+60 (f)	20mm 0,787"	1106,2	707,7	491,2	306,4	184,4	//	//	//	//	//	//	//		40
13+20	6	13+60 (f)	30mm 1,181"	//	//	//	//	//	108,1	76,6	44,2	//	//	//	//		40
12+20	6	12+60 (f)	35mm 1,377"	//	//	//	//	//	//	//	44,2	//	//	//	//		40
8+20	6	8+60	50mm 1,968"	//	//	//	//	//	//	//	//	27,9	19,4	10,9	//		40
5+20	6	5+60	60mm 2,362"	//	//	//	//	//	//	//	//	//	//	10,9	//		40
2+21	6	2+60	75mm 2,952"	//	//	//	//	//	//	//	//	//	//	//	6,9		39

f - only for PEEK sealing - not suitable for PTFE  
g - thrust on seat by actuator signal

**DIFFERENTIAL PRESSURES CHARTS bar ON THREE WAY OMC VALVES** 

**DIRECT OR REVERSE ACTION**  **LEAKAGE CLASS**  **cl. IV**  
ANSI FCI 70.2 - IEC 60534-4

SPRING RANGE (psi)	SPRING RANGE CODE	ACTUATOR SIGNAL (psi) (g)	TRAVEL	MAX DIFFERENTIAL PRESSURES IN bar on SEAT DIAMETER in mm												YOKE TYPE	kN (g)
				20mm 0,787"	25mm 0,984"	30mm 0,984"	38mm 1,496"	49mm 1,929"	64mm 2,519"	76mm 2,992"	96mm 3,779"	126mm 4,960"	151mm 5,944"	201mm 7,913"	250mm 9,842"		
36+46	5	0+82	20mm 0,787"	876,4	559,5	390,6	242,3	145,5	//	//	//	//	//	//	//	C,D	36
30+46	5	0+76	30mm 1,181"	//	//	//	//	//	71,7	50,8	29,4	//	//	//	//		30
18+46	5	0+64	50mm 1,968"	//	//	//	//	//	//	//	//	11,1	7,7	4,4	//		18
12+46	5	0+58	60mm 2,362"	//	//	//	//	//	//	//	//	//	//	//	1,8		12

g - thrust on seat by actuator signal

**DIRECT OR REVERSE ACTION**  **LEAKAGE CLASS**  **cl. VI**  
ANSI FCI 70.2 - IEC 60534-4

SPRING RANGE (psi)	SPRING RANGE CODE	ACTUATOR SIGNAL (psi) (g)	TRAVEL	MAX DIFFERENTIAL PRESSURES IN bar on SEAT DIAMETER in mm												YOKE TYPE	kN (g)
				20mm 0,787"	25mm 0,984"	30mm 0,984"	38mm 1,496"	49mm 1,929"	64mm 2,519"	76mm 2,992"	96mm 3,779"	126mm 4,960"	151mm 5,944"	201mm 7,913"	250mm 9,842"		
36+46	5	0+82 (f)	20mm 0,787"	876,4	559,5	390,6	242,3	145,5	//	//	//	//	//	//	//	C,D	36
30+46	5	0+76 (f)	30mm 1,181"	//	//	//	//	//	81,1	57,5	33,2	//	//	//	//		30
18+46	5	0+64	50mm 1,968"	//	//	//	//	//	//	//	//	12,6	8,7	4,9	//		18
12+46	5	0+58	60mm 2,362"	//	//	//	//	//	//	//	//	//	//	//	2,1		12

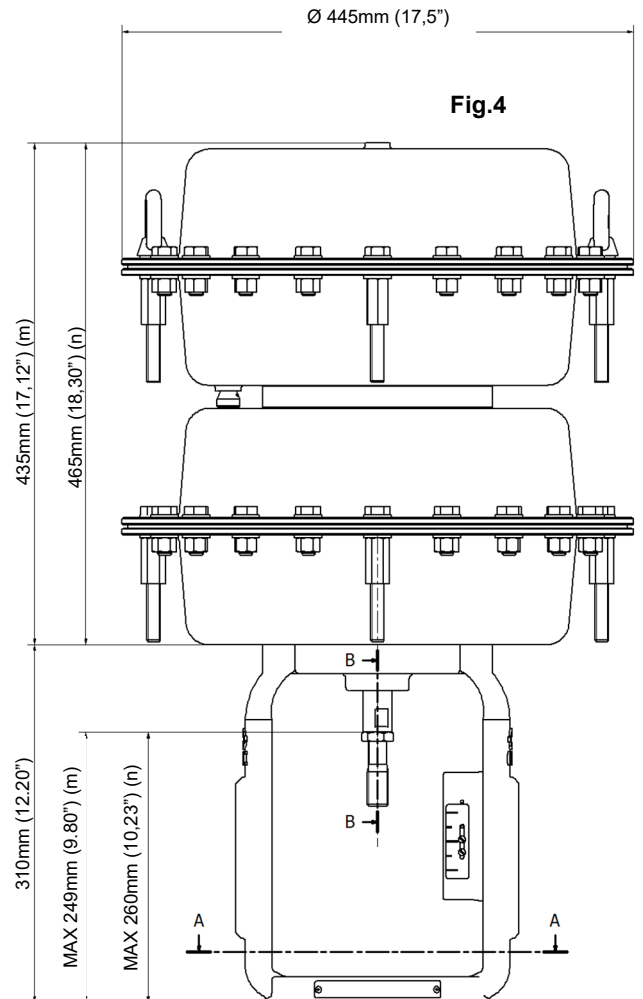
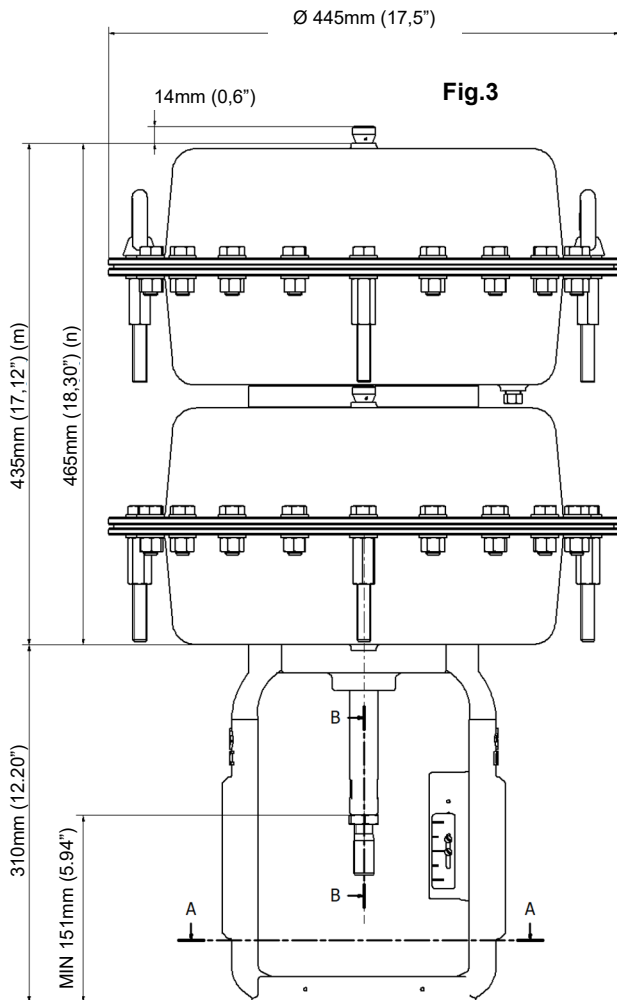
f - only for PEEK sealing - not suitable for PTFE  
g - thrust on seat by actuator signal



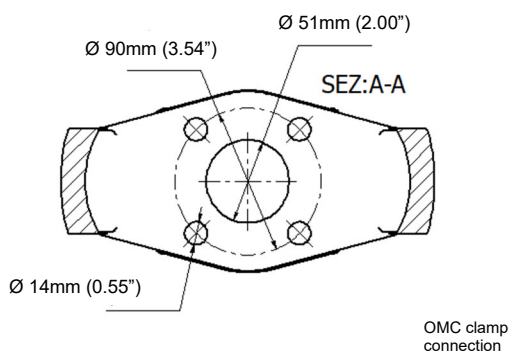
**ACTUATOR DIMENSIONS**

**AX88 - REVERSE  
YOKE TYPE "C" / "D"**

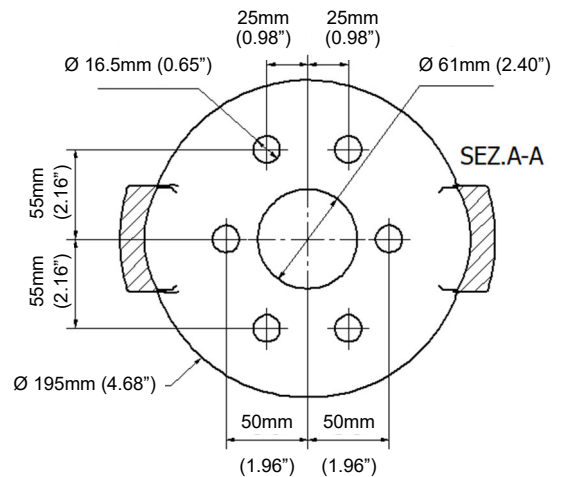
**AX88- DIRECT  
YOKE TYPE "C" / "D"**



**YOKE CONNECTION  
TYPE "C"**



**YOKE CONNECTION  
TYPE "D"**

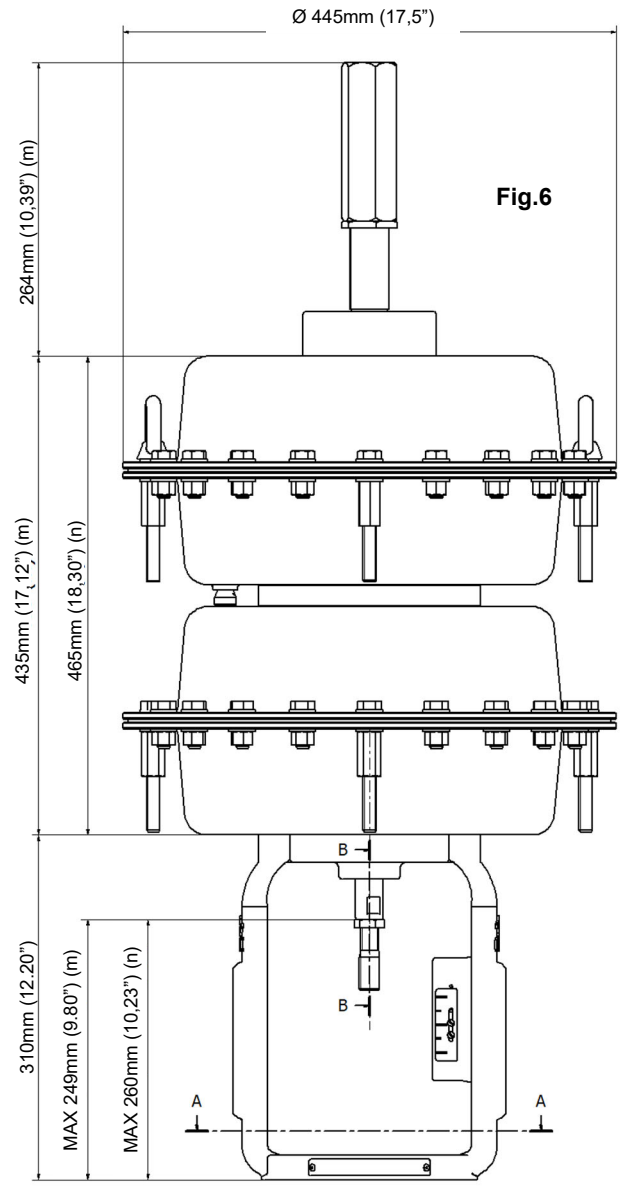
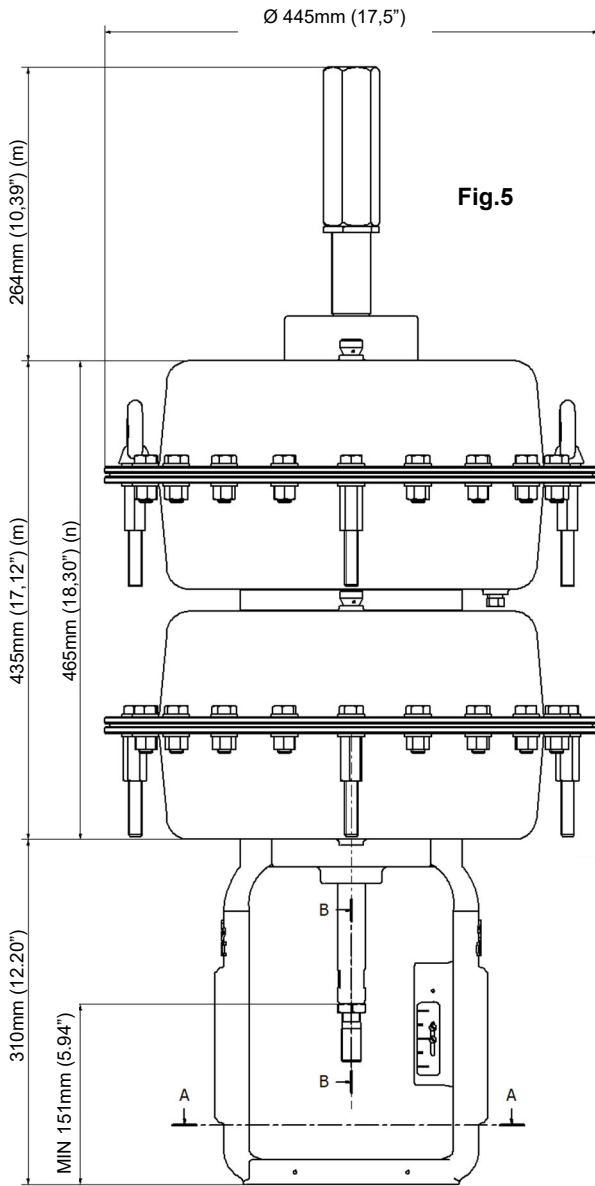


m - for nominal travel up to 60mm  
n - for nominal travel 75mm

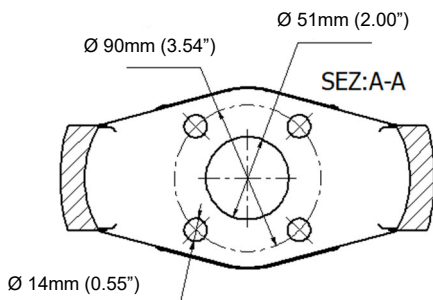


**AX88 - REVERSE WITH TRAVEL STOP  
YOKE TYPE "C" / "D"**

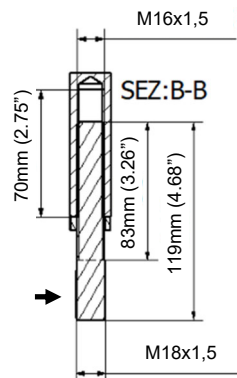
**AX88- DIRECT WITH TRAVEL STOP  
YOKE TYPE "C" / "D"**



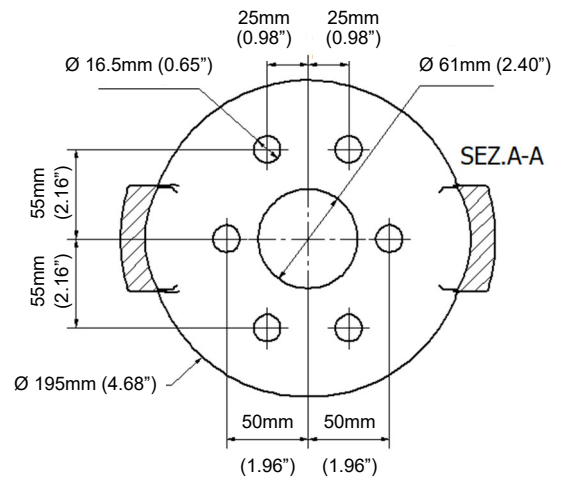
**YOKE CONNECTION  
TYPE "C"**



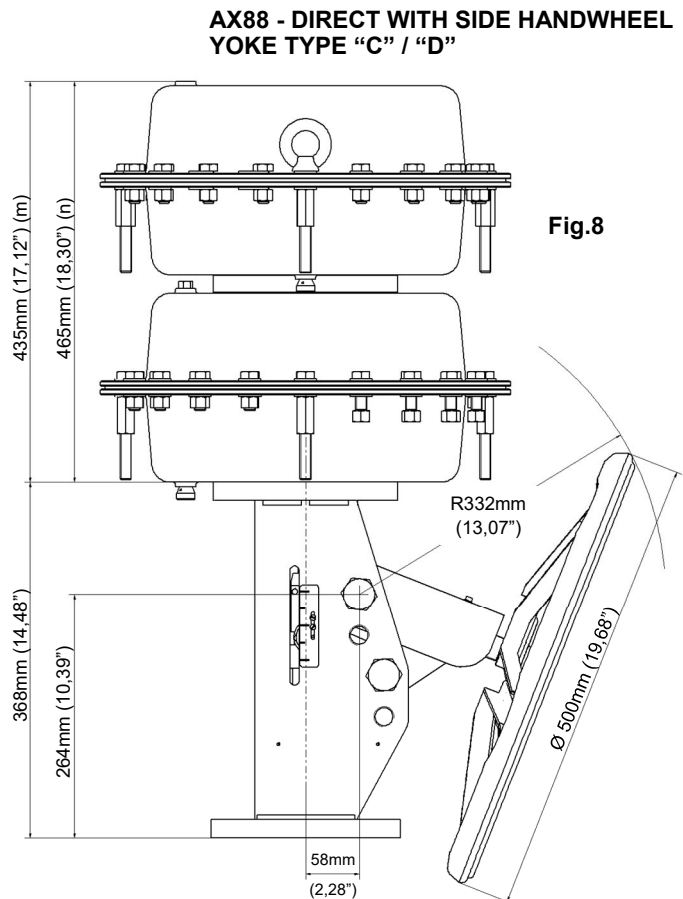
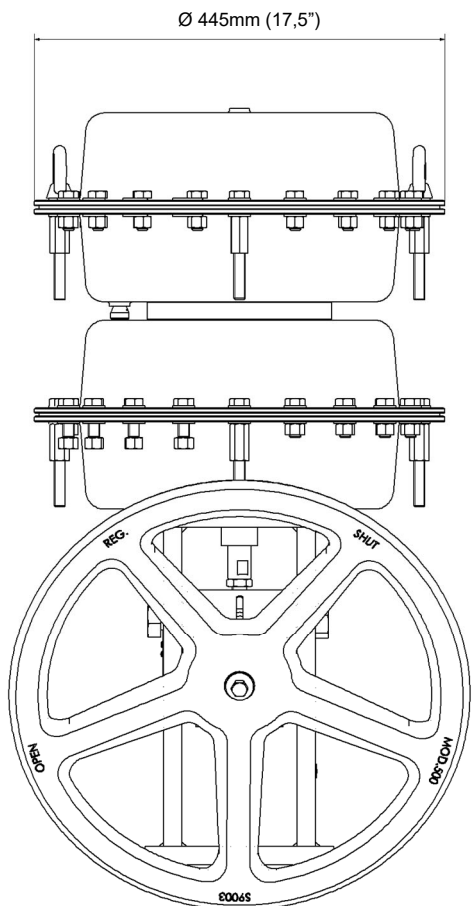
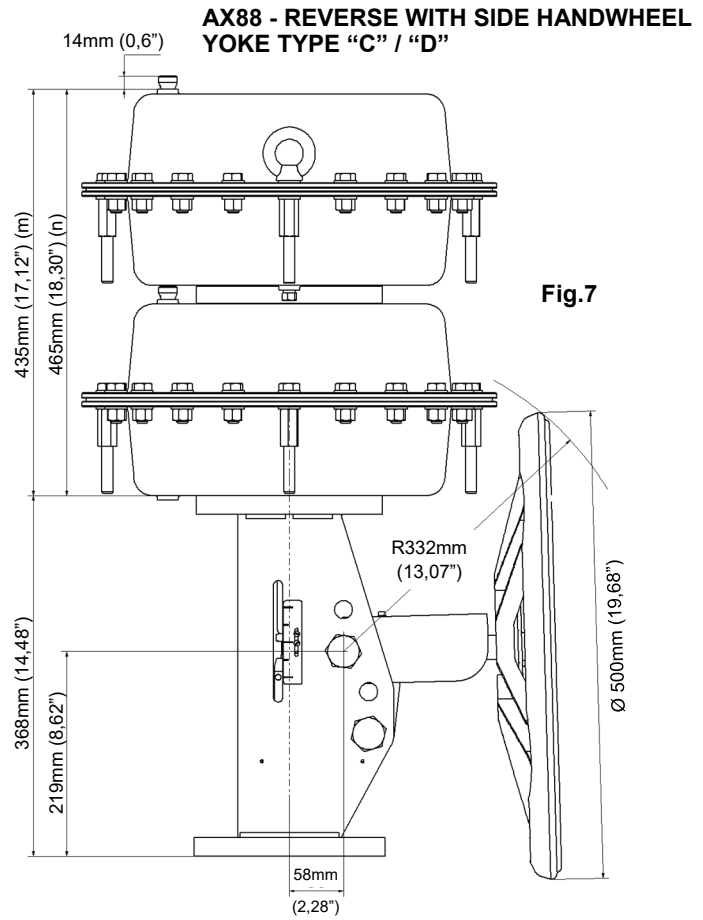
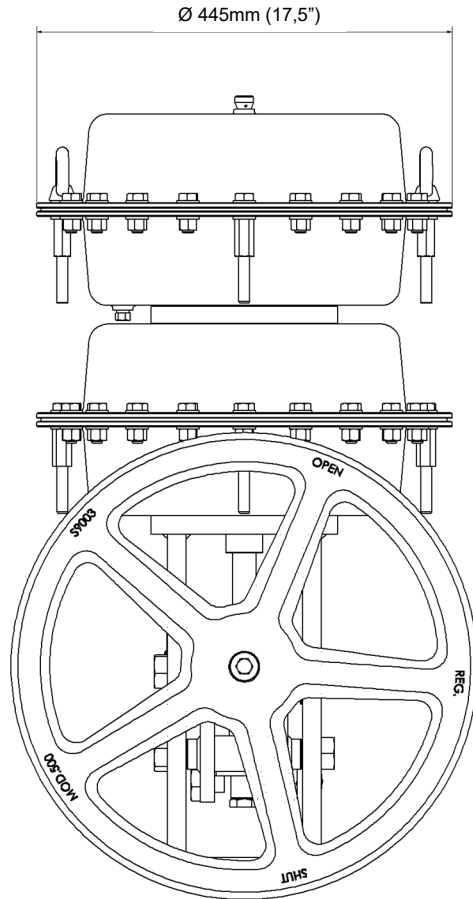
Attacco per morsetto OMC



**YOKE CONNECTION  
TYPE "D"**



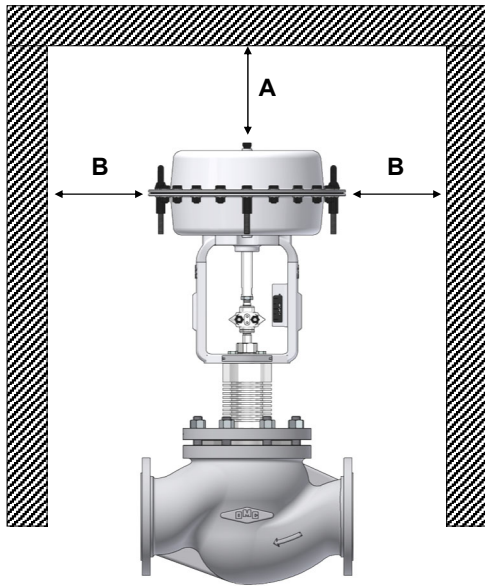
m - for nominal travel up to 60mm  
n - for nominal travel 75mm



m - for nominal travel up to 60mm  
n - for nominal travel 75mm



**MINIMUM CLEARANCE REQUIRED TO REMOVE THE ACTUATOR ON OMC VALVES**



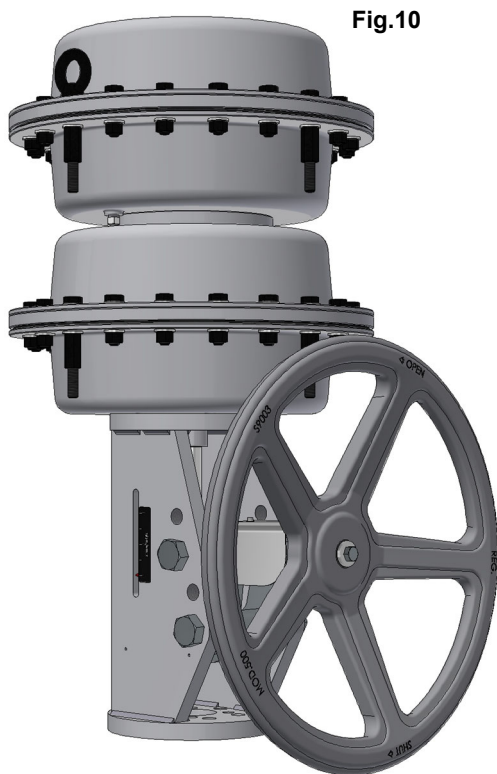
**Fig.11**

A = 140mm (5,5") + required distance for the use of lifting equipment  
 B = 200mm (7,9") + required distance for the use of lifting equipment

**Note:** necessary space must be verified by the customer

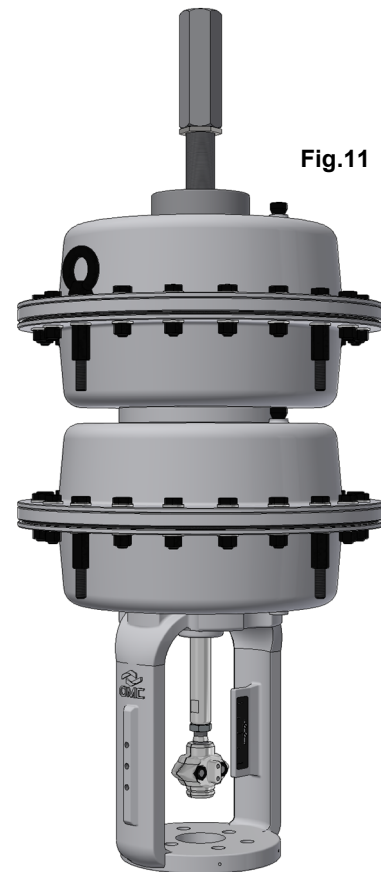
**PNEUMATIC ACTUATOR WEIGHT**

YOKE	STANDARD	WITH SIDE HANDWHEEL	WITH TRAVEL STOP
TIPO "C"	~ 95 kg (210 lb)	~ 118 kg (260 lb)	~ 101 kg (222 lb)
TIPO "D"	~ 98 kg (216 lb)	~ 121 kg (267 lb)	~ 103 kg (227 lb)



**Fig.10**

**AX88 WITH SIDE HANDWHEEL**



**Fig.11**

**AX88 WITH TRAVEL STOP**



## HOW TO ORDER

Actuator type:  
**AX** = Standard (WCB version)  
**LX** = With side handwheel (WCB version)  
**AS** = Standard (Stainless Steel version)  
**LS** = With side handwheel (Stainless Steel version)

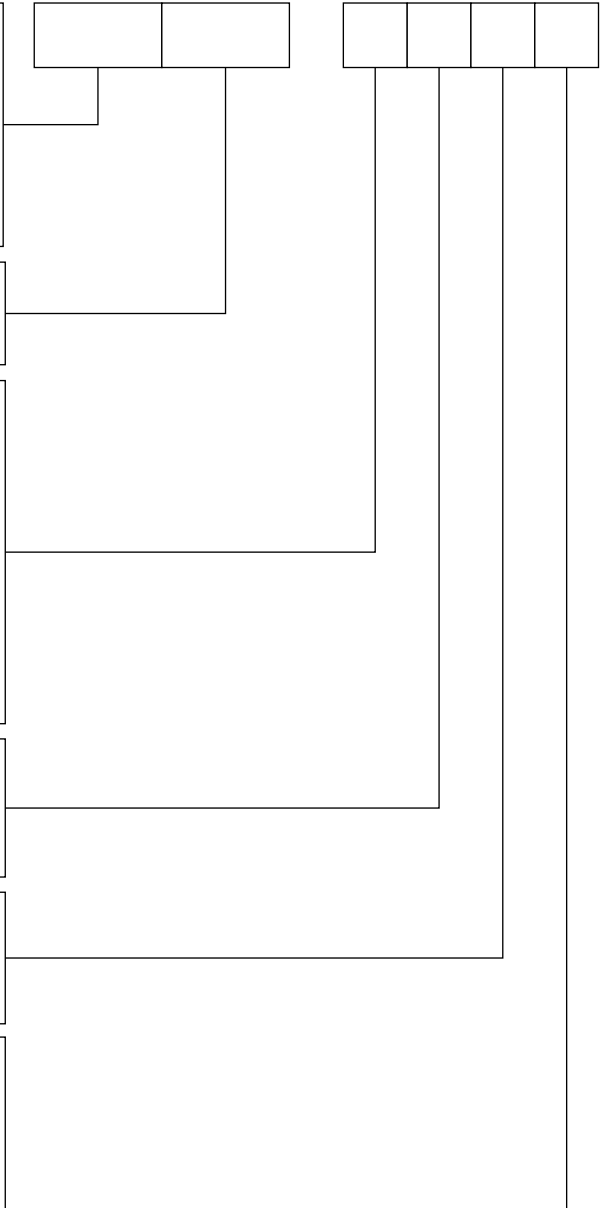
Actuator model  
**88**= Diameter 445 TANDEM

Yoke connection  
**C**= Type C - bore Ø51mm + 4 VITI - for OMC valves:  
 - DN125+200 PN16+40  
 - DN65+100 PN160+250  
 - 6" ÷ 8" ANSI 150+300  
 - 2½" ÷ 4" ANSI 900+1500  
**D**= Type D - bore Ø61mm + 6 VITI - for OMC valves:  
 - DN250 PN16+40  
 - DN125+200 PN63+100  
 - 10" ANSI 150+300  
 - 6" ÷ 8" ANSI 600

Spring range:  
**5** = 36+46 psi / 30+46 / 28+46 / 18+46 / 12+46 / 6+49  
**6** = 15+20 psi / 13+20 / 12+20 / 8+20 / 5+20 / 2+21

Action:  
**D** = Direct / Springs retract stem  
**R** = Reverse / Springs extend stem

Travel:  
**A** = 20mm (0,787 inch)  
**B** = 30mm (1,180 inch)  
**C** = 35mm (1,377 inch)  
**E** = 50mm (1,968 inch)  
**F** = 60mm (2,362 inch)  
**G** = 75mm (2,952 inch)



The content of this publication is for informational purposes.

OMC reserves the right to modify and improve the technical drawings and specifications without any prior notice.